



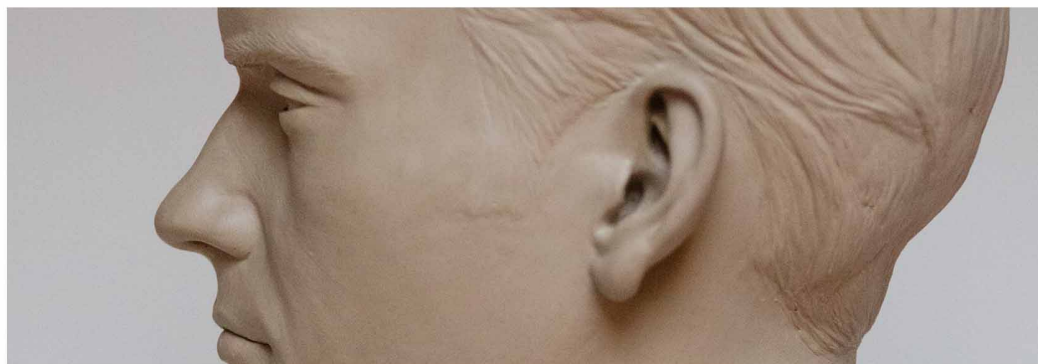
Mr Griffis - Life size clay

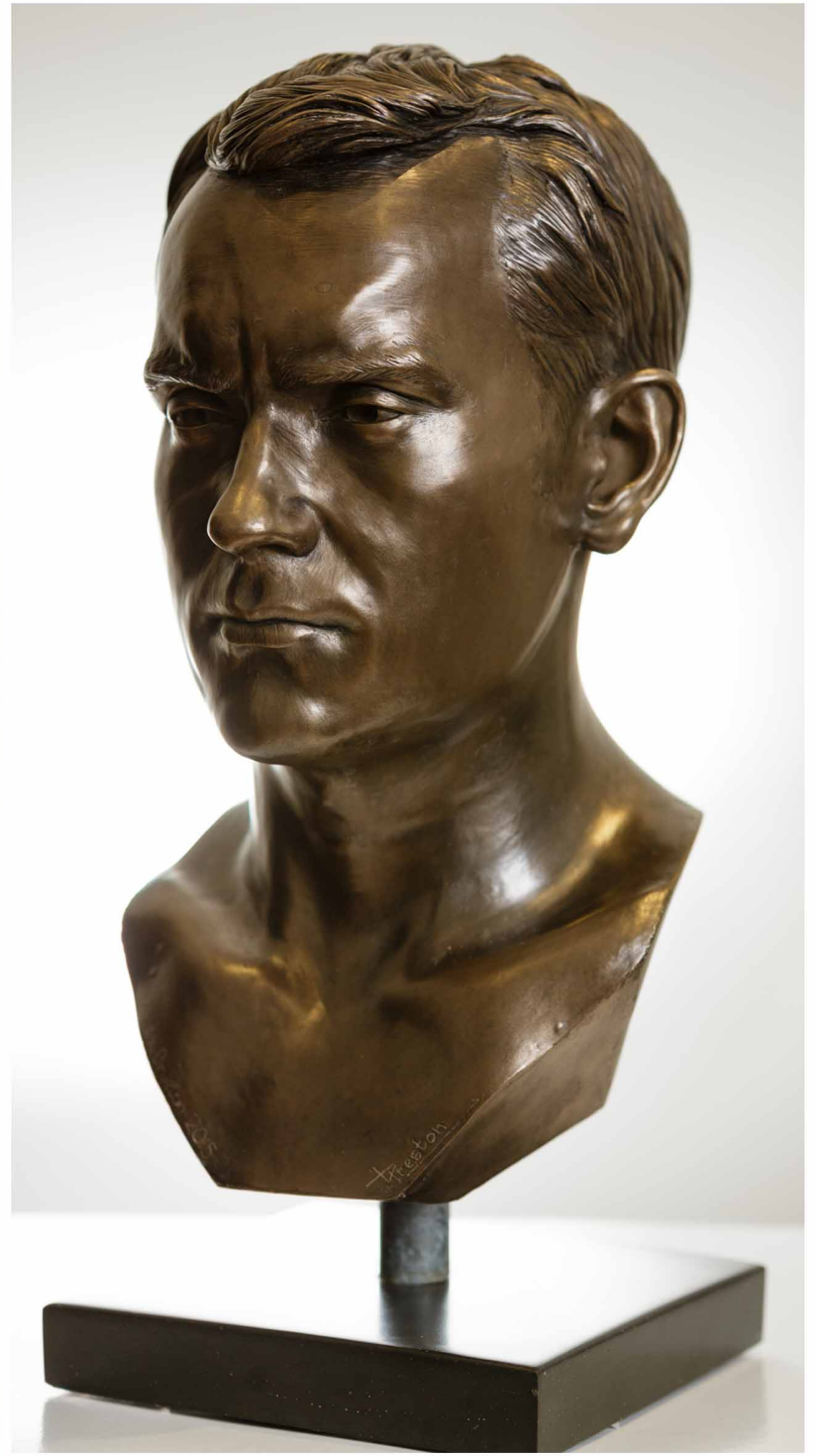






Alex Brueton - life size - private commission.



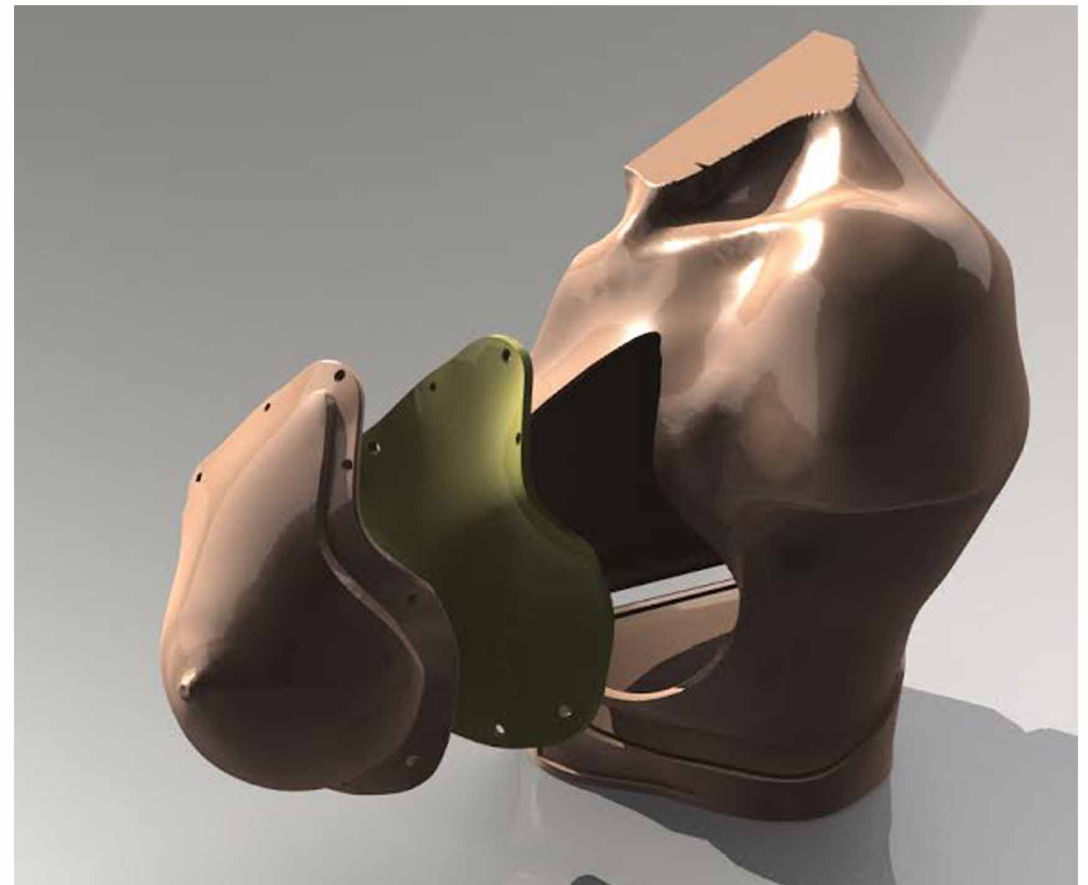
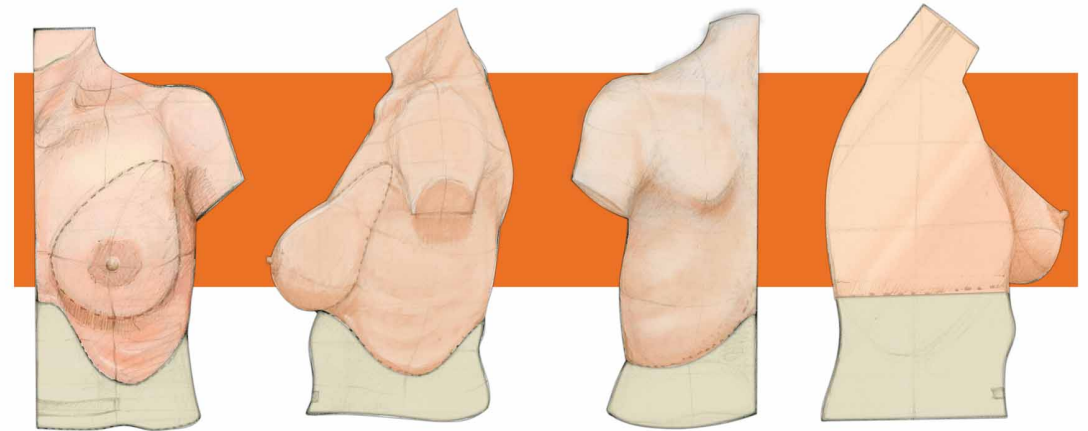
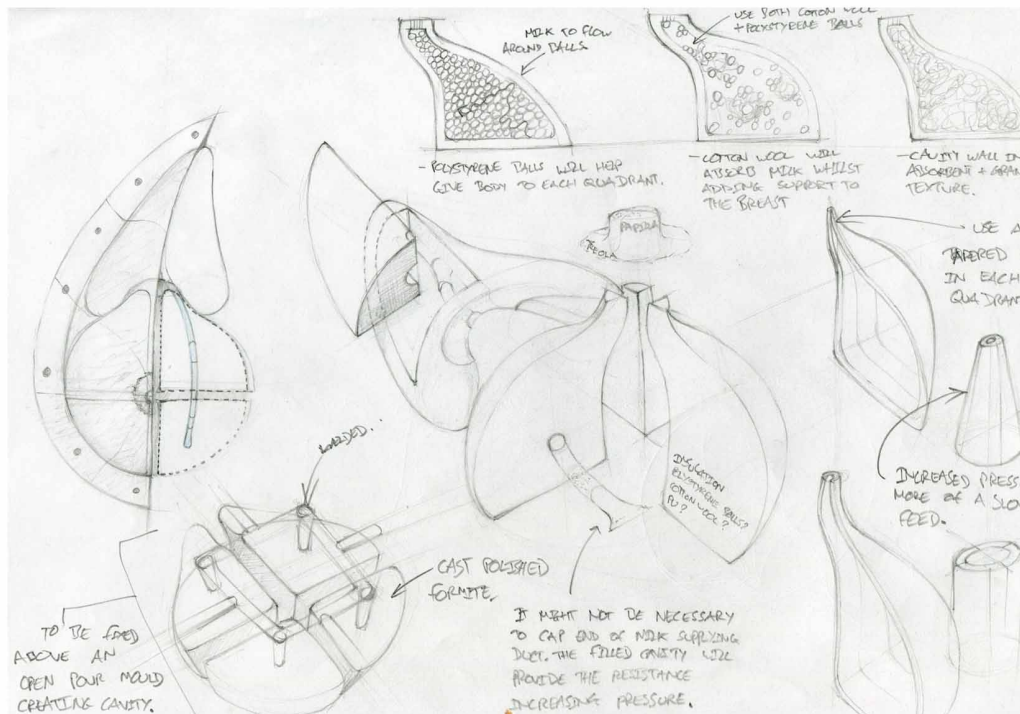




Breakdancer - 1/2 life size bronze - private commission.



1 of 3 sculptures - Hear no evil, See no evil and Speak no evil.
Private commission.



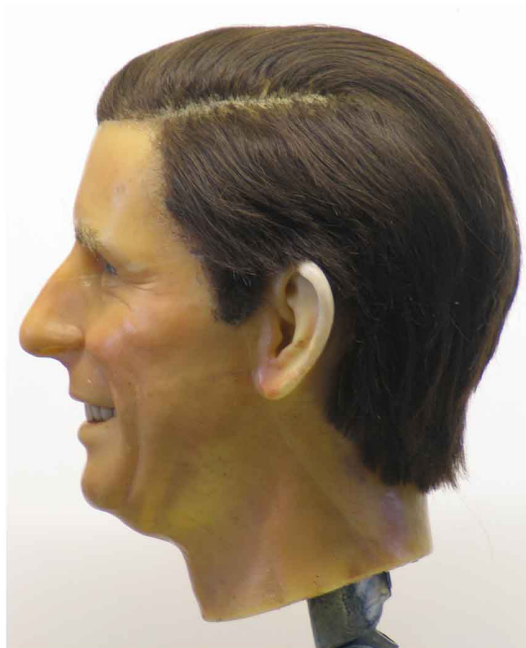
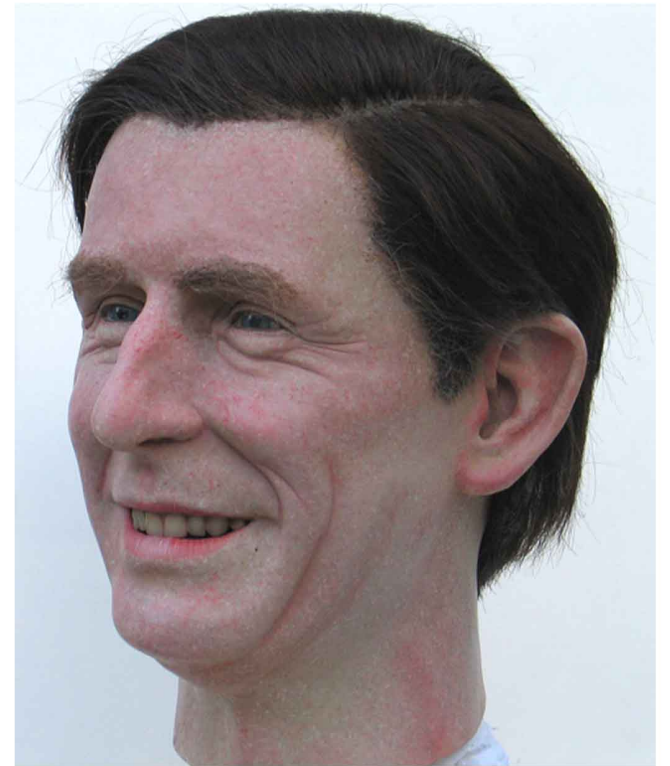
Breast feeding simulator - medical design consultation.



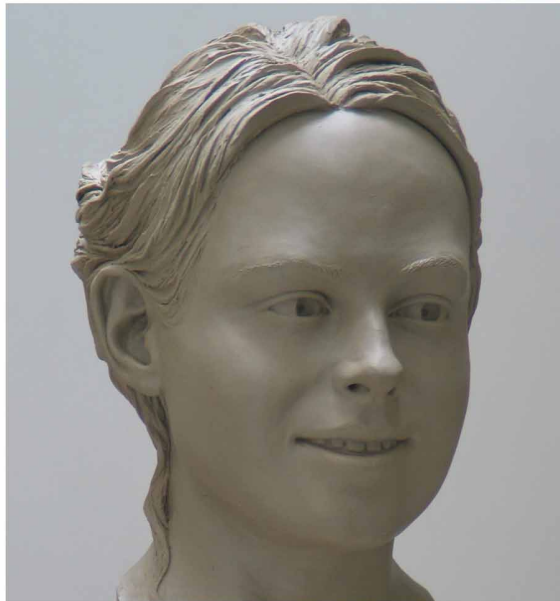
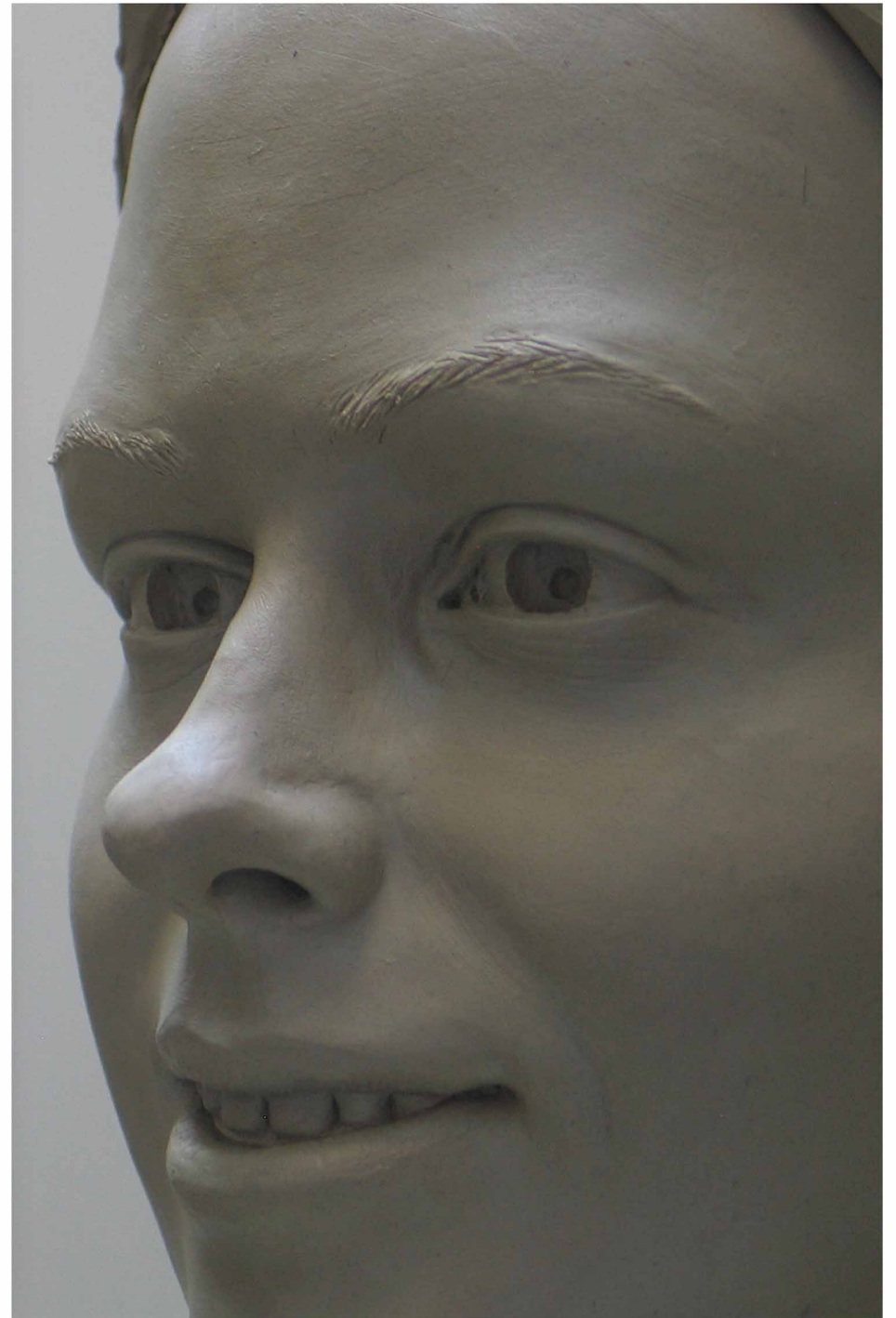
Ceiling rose master - Locker and Riley



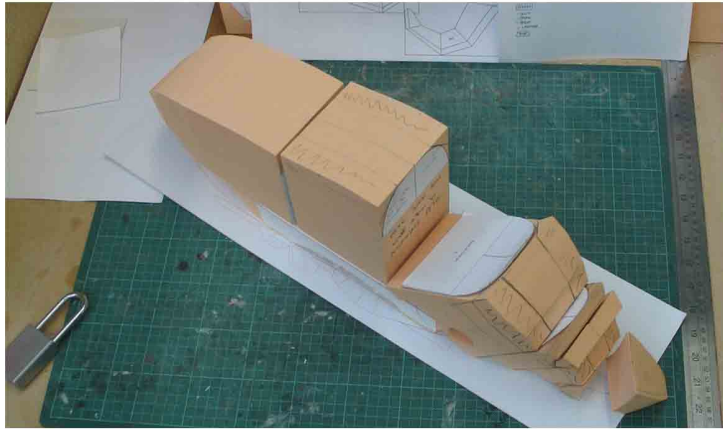
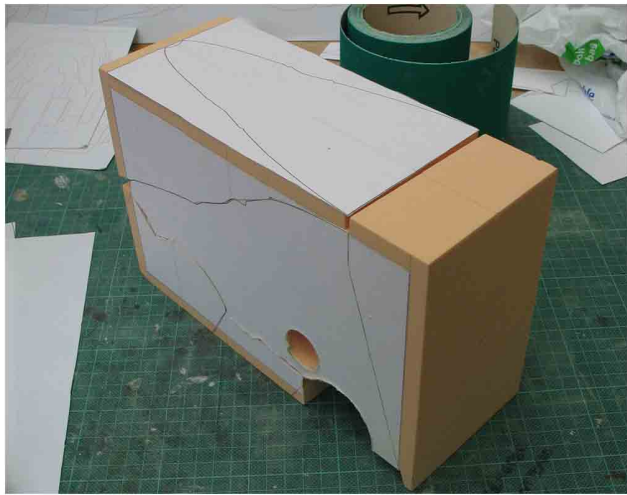
Marlene - 1/3 life size - private commission.



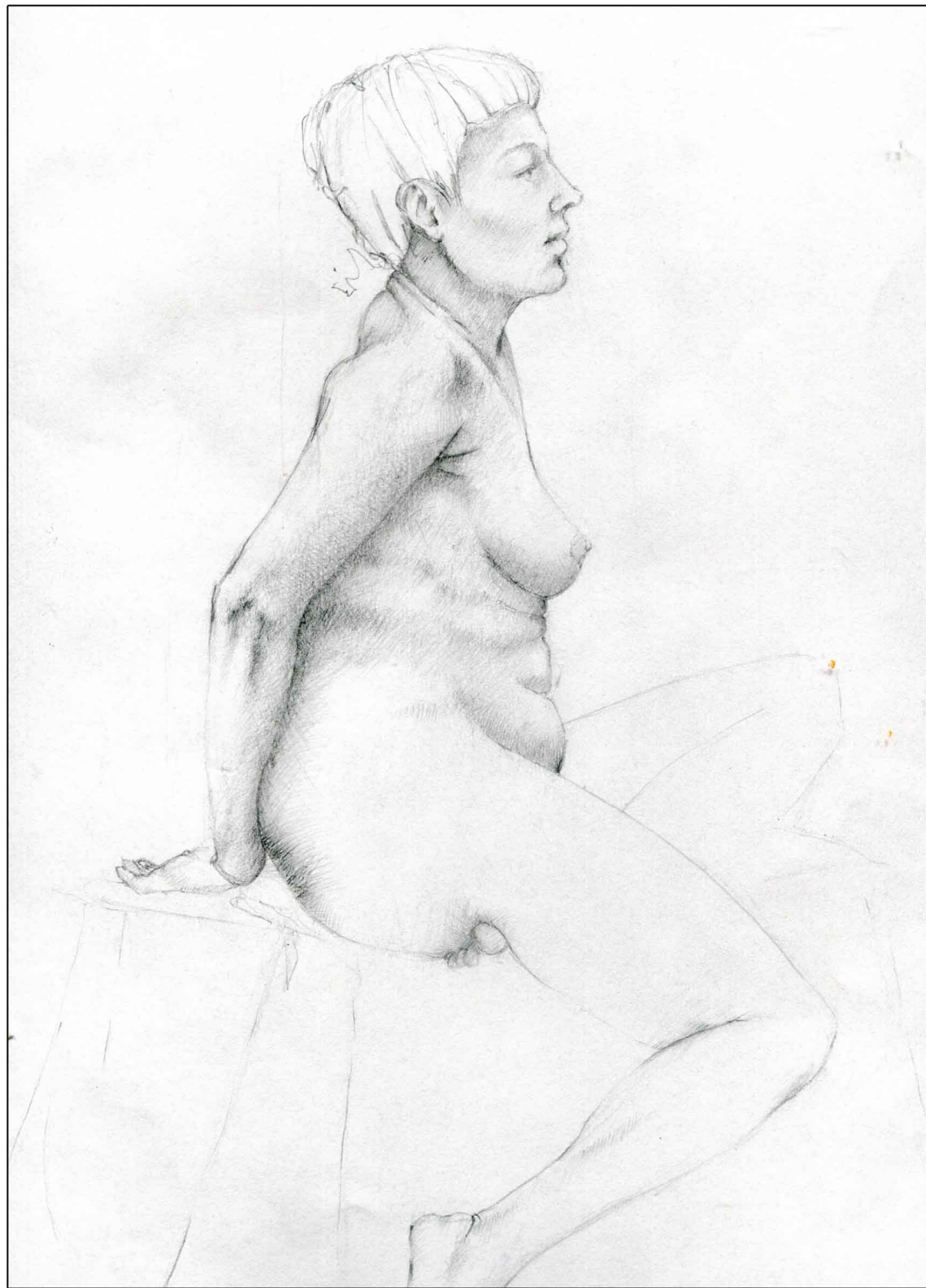
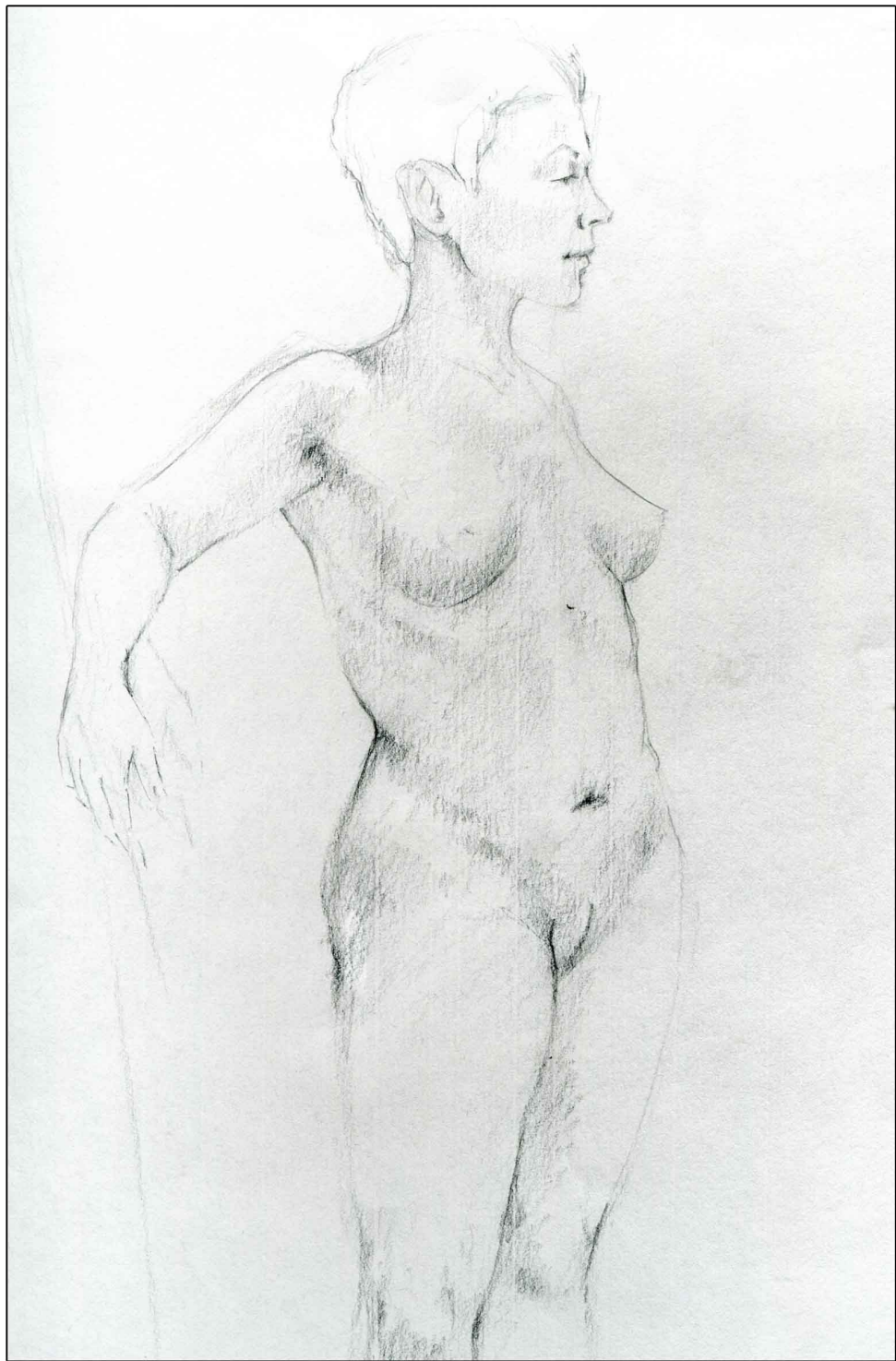
Prince Charles antique Madame Tussauds wax head - Restoration piece for BBC's Flog it.



Emily Back - life size - Private commission



1:6 motorbike - toy prototype.





CV 2015 Luke Preston

I place great value on my observational skills which are mainly based around figurative works. These are practically applied in clay, illustration and model making. These are highly transferrable skills. They provide my current and future client(s)/employer(s) with a datum to judge quality craftsmanship. On this basis I then adapt my 3D thinking to differing trades:

Mr Griffis (sea and iron) - Private commission - Life size bust cold cast iron - 2015.

Alex Brueton - Private commission - Life size bust cold cast bronze - 2015.

Pharmabotics - Medical product consultation. - 2011-2014

Stylised orangutan trio - Interior (unnamed). - 2010-2011

Locker & Riley - Enrichment masters - 2010

Marlene Secille - Private commission - 1/3 life size cold cast marble 2009-2010

BBC - Restoration - Antique Madame Tussaud wax head - 2009

James Brueton - Private commission - Life size bust cold cast bronze and aluminium - 2009

Madame Tussaud (Holywood project) - Junior sculptor - 2008 - 2009

University of Hertfordshire:- Modelmaking and Special effects 2005-2008, completed with 1st Class HONS.

Kingston University:- Foundation 2004-2005, completed with Distinction.